



April 2010

WWW.LRCJ.ORG

GIS & Mapping Unit

## Land Suitability for Forestation in the West Bank

This study is implemented by:

**Land Research Center - LRC**

Funded by:

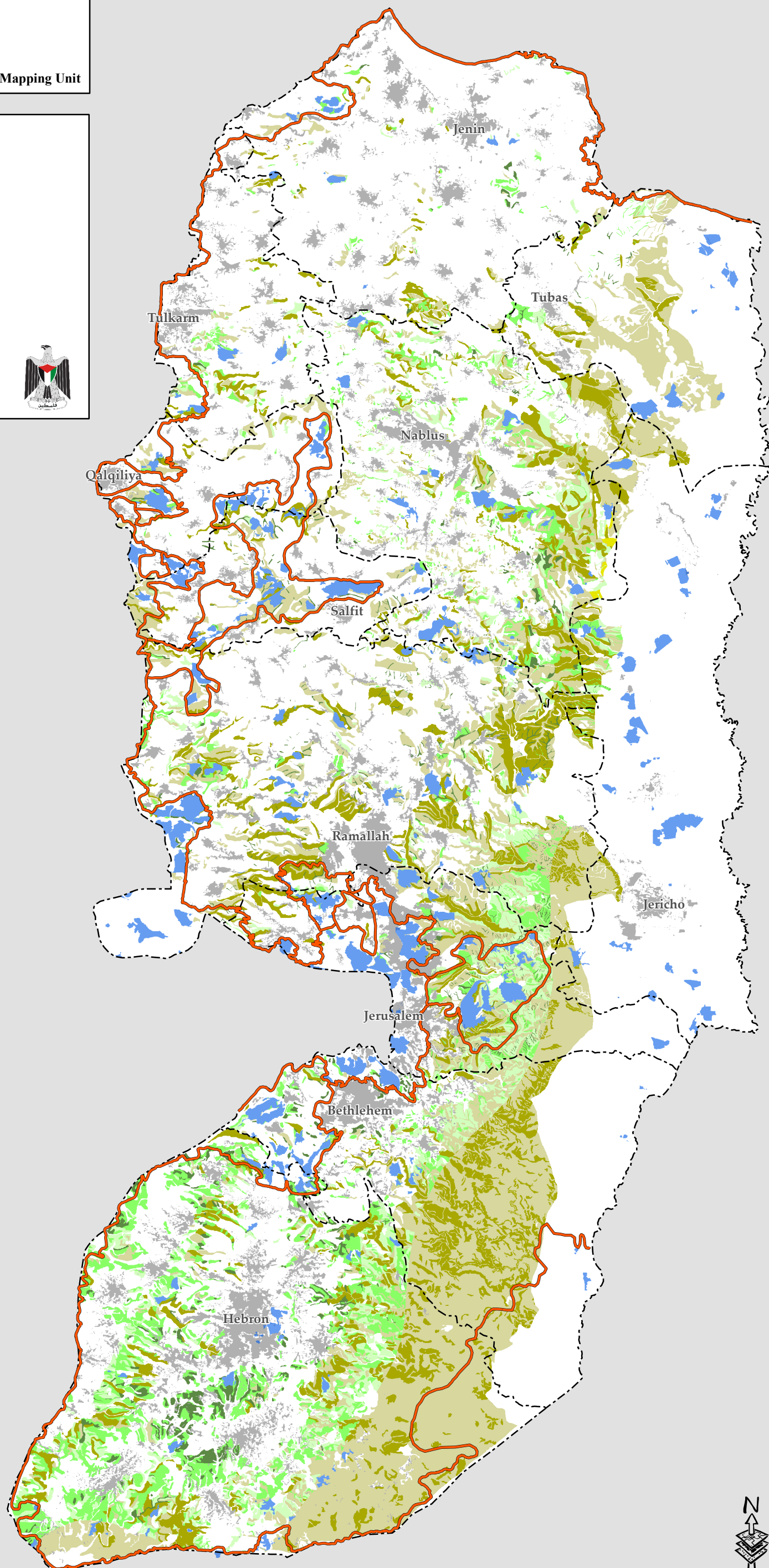
**The Italian Cooperation**

Administrated by:

**United Nations Development Program UNDP / PAPP**

Supervised by:

**Palestinian Ministry of Agriculture**



### Legend

- Annexation & Expansion Wall
- Governorates Boundaries
- Israeli Colony
- Pal. Builtup Area
- Land Suitable for Rangeland - 810.7 Km
- Land Suitable for Forestation - 378.4 Km
- Land Suitable for Reclamation - 497.0 Km
- Most Suitable
- Highly Suitable
- Moderately Suitable
- Least Suitable



1:360,000